

DISEASES

Aphanomyces root rot



Photo: Syama Chatterton, AAFC



Root rot and seedling diseases – *Pythium*, *Rhizoctonia*, *Fusarium*



Environmental damage – physiological, not a pathogen



Fusarium wilt



Photo: Alberta Pulse Growers

Mycosphaerella (Ascochyta) blight



Bacterial blight



White mould



Photo: Alberta Pulse Growers

Downy mildew



Typical



Severe

Powdery mildew



Photo: Alberta Pulse Growers

INSECTS

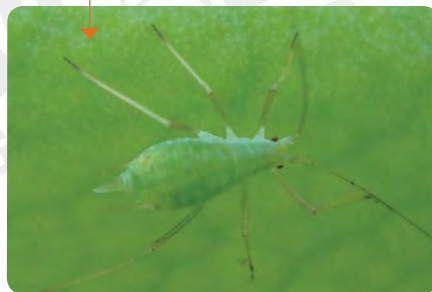
Pea leaf weevils



Wireworms



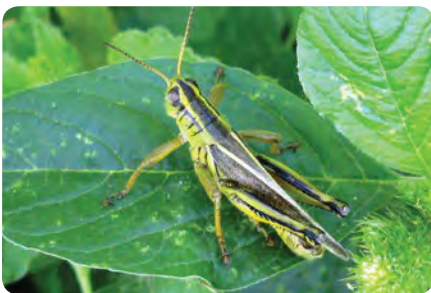
Pea aphids



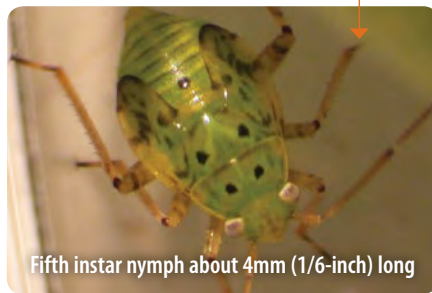
Cutworms



Grasshoppers



Lygus bugs



Fifth instar nymph about 4mm (1/6-inch) long



Adult about 5mm (1/5-inch) long

Photo: Tharshu Nagalingam

Refer to the *Field Pea Insect and Disease Scouting Calendar* for scouting timelines and pest impact on yield and quality.